

**TOWSMART Part Number: 2077**

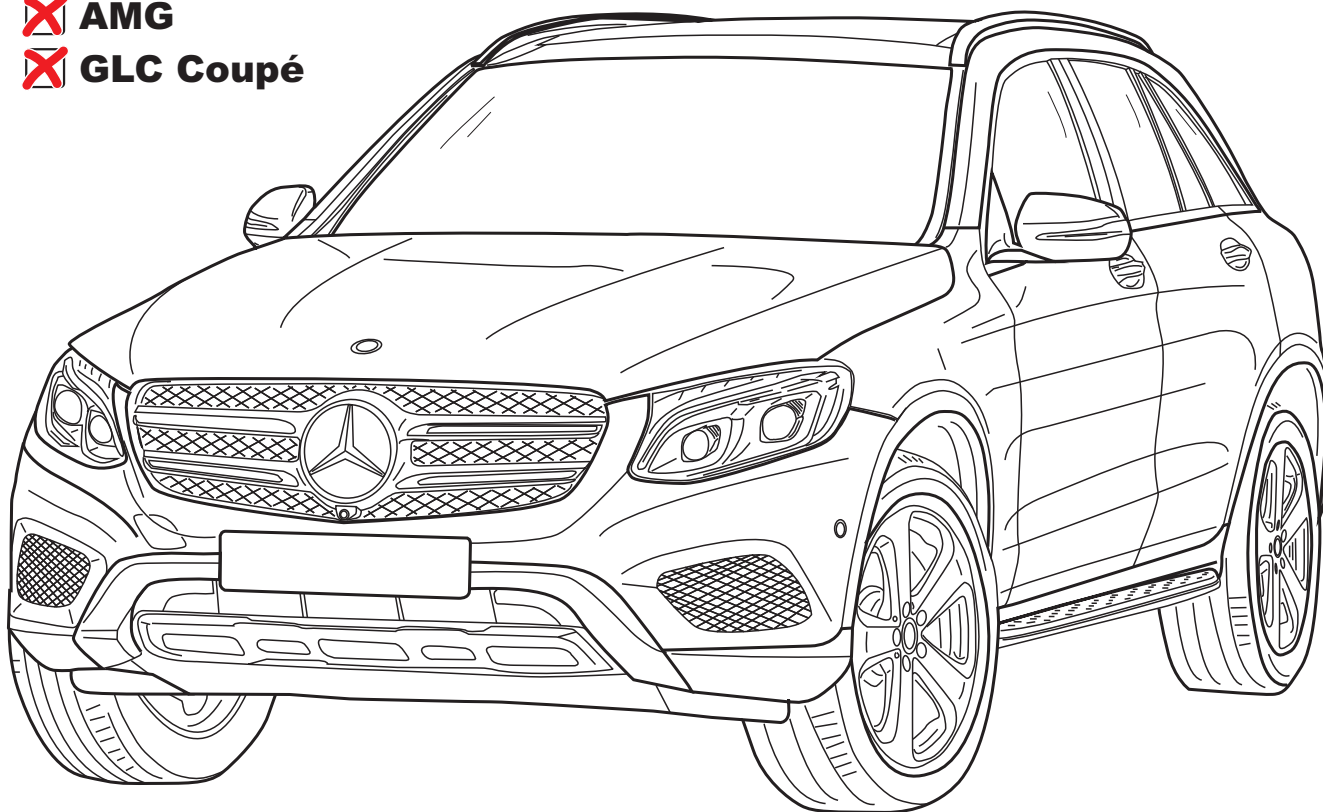
ORIS Part Number: 200774

**Mercedes GLC (SUV)**

**06/2015 -**



- Facelift 07/2019 -**
- Hybrid**
- AMG Line**
- AMG**
- GLC Coupé**



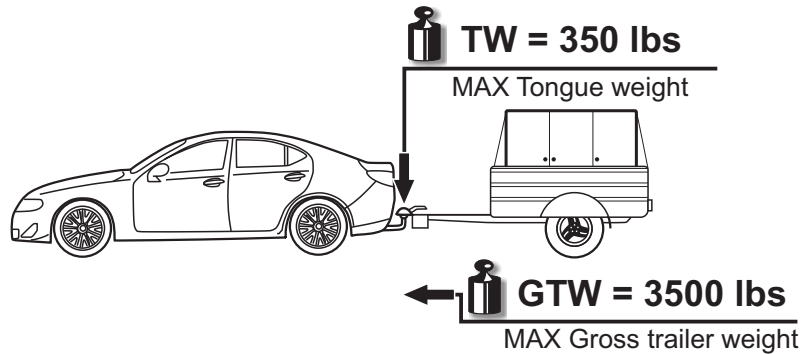
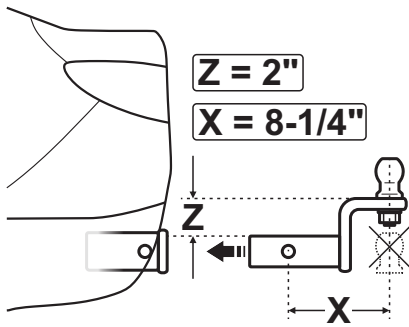
Check our webpage for the latest and a full-color copy of this fitting instruction.

[www.oris-automotive.com/en/](http://www.oris-automotive.com/en/)

Version: 03  
Date: 16-09-2024



THESE INSTRUCTIONS MUST BE GIVEN TO THE END USER



Never exceed the vehicle or the hitch manufacturer's recommended towing capacity and tongue weight.



### IMPORTANT SAFETY NOTICE FOR HITCH INSTALLERS AND CUSTOMERS

Read all installation, operating and safety instructions along with all labels before installing or using this product. Failure to comply with the safety information could result in serious injury or death.



[www.oris-automotive.com/en/safety/](http://www.oris-automotive.com/en/safety/)



**WARNING:** This product can expose you to chemicals including carbon black, which is known to the State of California to cause cancer. For more information go to [www.P65Warnings.ca.gov](http://www.P65Warnings.ca.gov)



**WARNING:** Do not perform any installation or towing procedures without fully understanding the correct tools and actions for all steps. Call for support if needed.



[www.oris-automotive.com/en/acps-automotive-aftermarket-worldwide/](http://www.oris-automotive.com/en/acps-automotive-aftermarket-worldwide/)

## Legend / Légende / Leyenda



US Attention  
F Attention  
E Atención



US Incorrect  
F Incorrect  
E Incorrecto



US Correct  
F Correct  
E Correcto



US Inspect  
F Examiner  
E Revise



US In both sides  
F Tous les deux côtés  
E En ambos lados



US Manually  
F À la main  
E A mano



US Only 2 persons may carry out  
F Toujours s'y mettre de deux  
E Operación que requiere dos personas



US Remove  
F Rebuter  
E Tratamiento de residuos



US Location/Position Arrow  
F Flèche de Position  
E Flecha de posición



US Movement Arrow  
F Flèche de mouvement  
E Flecha de movimiento

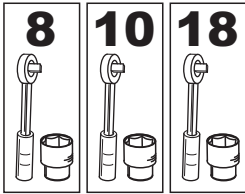


US Protect it against corrosion  
F Protéger contre la corrosion  
E Proteger contra la corrosión

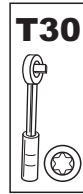


US Electrical connection  
F Connexion électrique  
E Conexión eléctrica

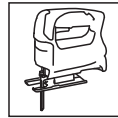
## Tools Required / Outils requis / Herramientas requeridas



RATCHET WITH SOCKET



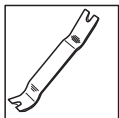
TORX



CUTTING TOOL



TORQUE WRENCH WITH SOCKET 10, 13, 17, 19



PLASTIC PRY

## Safety / Sécurité / Seguridad

Should be worn at all times while installing this product.

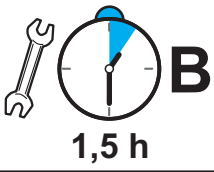
Il doit être porté en permanence lors de l'installation de ce produit.

Debe llevarse en todo momento mientras se instala este producto.

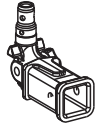


# Assembly / Assemblage / Montaje

Mounting time



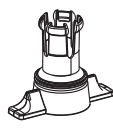
Spare Parts



290019



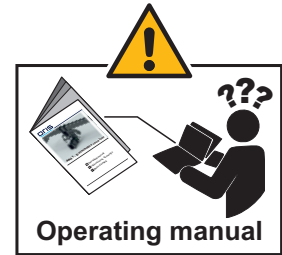
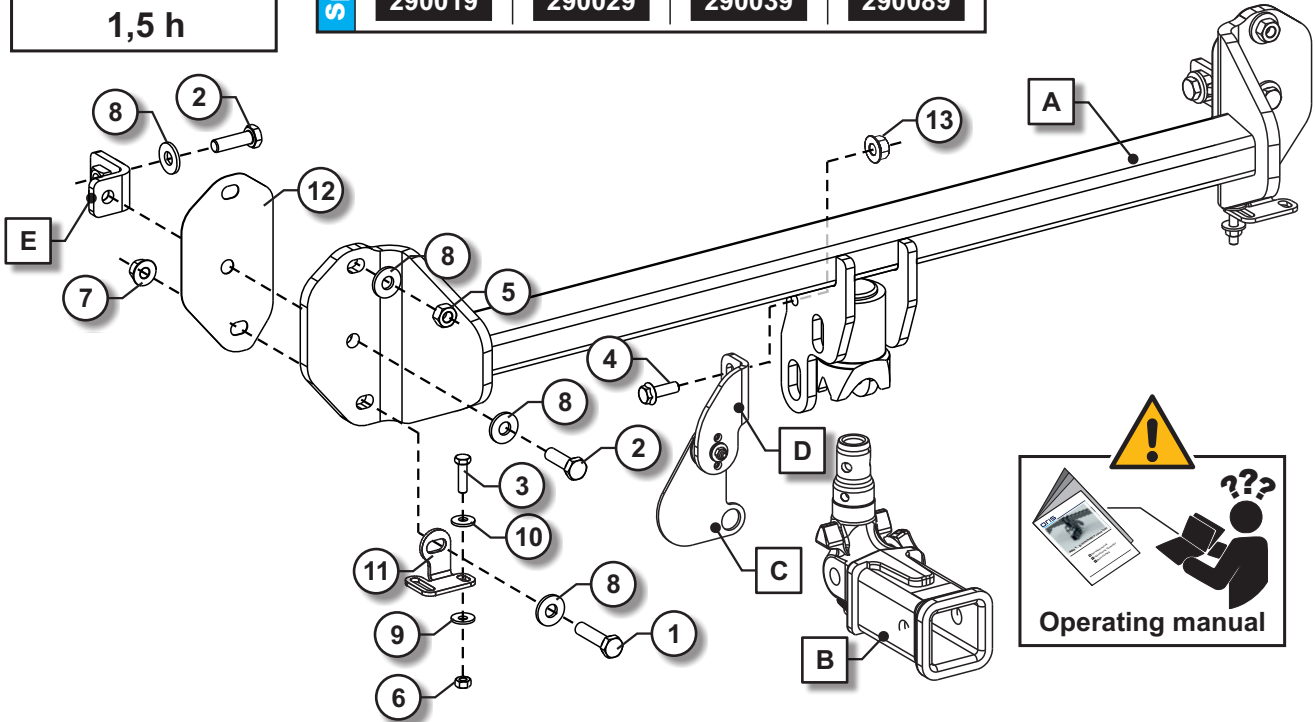
290029



290039



290089



|   |  |    |
|---|--|----|
| A |  | 1x |
|---|--|----|

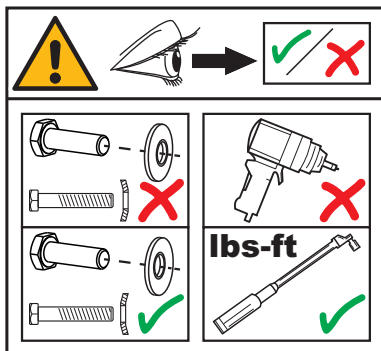
|   |  |    |
|---|--|----|
| B |  | 1x |
|---|--|----|

|   |  |    |
|---|--|----|
| C |  | 1x |
|---|--|----|

|   |  |    |
|---|--|----|
| D |  | 1x |
|---|--|----|

|   |  |    |
|---|--|----|
| E |  | 1x |
|---|--|----|

|    |  |            |      |    |           |
|----|--|------------|------|----|-----------|
| 1  |  | M12x50     | 10.9 | 2x | 86 lbs-ft |
|    |  | M12x40     | 10.9 | 4x | 86 lbs-ft |
|    |  | M8x40      | 10.9 | 2x | 25 lbs-ft |
| 2  |  | M12x40     | 10.9 | 4x | 86 lbs-ft |
| 3  |  | M8x40      | 10.9 | 2x | 25 lbs-ft |
| 4  |  | M10x30     | 10.9 | 1x | 50 lbs-ft |
| 5  |  | M12x1,5    | 10   | 2x | 86 lbs-ft |
|    |  | M8         | 10   | 2x | 25 lbs-ft |
| 6  |  | M8         | 10   | 2x | 25 lbs-ft |
| 7  |  | M12        | 10   | 2x | 86 lbs-ft |
| 8  |  | 13x30x3,2  |      | 8x |           |
|    |  | 8,4x22x2,2 |      | 2x |           |
| 9  |  | 8,4x22x2,2 |      | 2x |           |
| 10 |  | M8         |      | 2x |           |
| 11 |  |            |      | 2x |           |
| 12 |  |            |      | 2x |           |
| 13 |  | M10        | 10   | 1x | 50 lbs-ft |



**1**

**A. Open trunk and Plastic panel on the inside of trunk to expose 3 8mm tail light nuts on each side**

**2**

**A. Remove the taillight and disconnect electrical connector**

**3**

**A. Remove trunk sill and 1 T30 screw**

**4**

**A. Remove 2 10mm nuts from the frame**

**5**

**A. Remove 4 push clip and 1 8mm screw**

**6**

**A. Remove push clip on each side under the tail light**

**7**

**A.** Remove 2 10mm screws from under the bumper each side

**8**

**A.** Then 2 more 10mm screw from the center of underside of bumper

**9**

**A.** Remove bumper and disconnect any wire harness

**10**

**A.** Remove 10 and 18mm nuts holding crash beam on (make sure to support exhaust with a strap before removing the exhaust hanger hardware)

**11**

**A.** Remove crash beam and throw out

**12**

**A.** Look inside frame rail and depending on frame rail pictures provided proceed to step 14 or 18

**13**

**18**

**14**

A. Look inside frame rail and depending on frame rail pictures provided proceed to step 14 or 18

**14**

A. Remove module inside of trunk

**15**

**Hybrid**

A. Remove metal piece that is attached to frame rail

**16**

**Hybrid**

A. Make a small cut in the end of the metal to accommodate for L shaped bracket installed in step 18

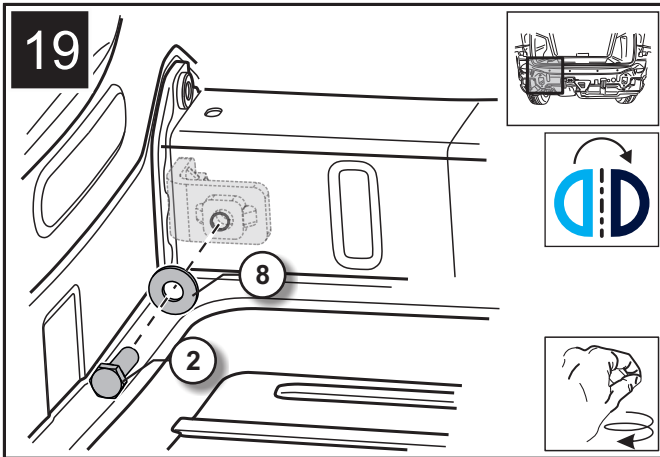
**17**

**Hybrid**

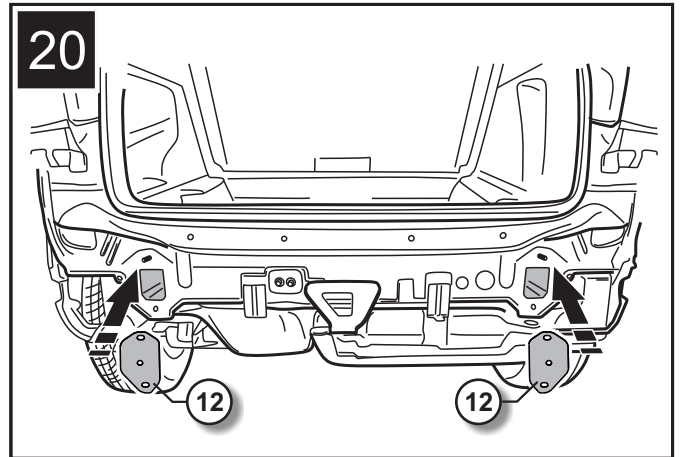
A. Install metal piece that is attached to frame rail

**18**

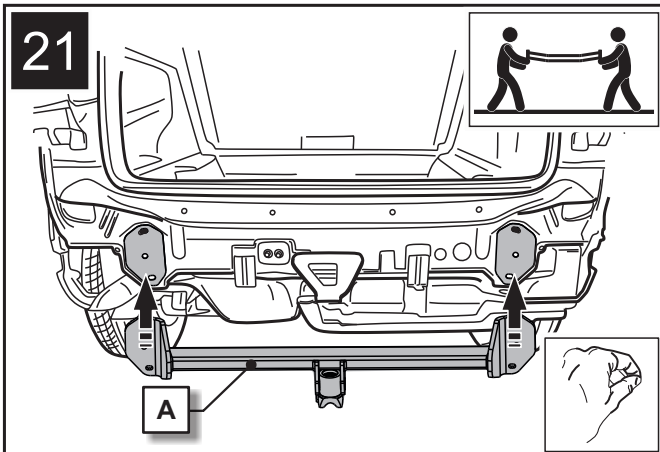
A. Install small I shaped bracket into both sides of frame rail



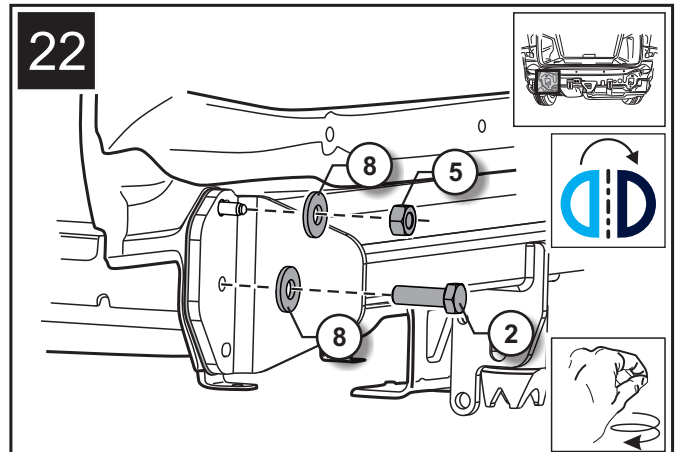
A. Hand tighten bolts for now



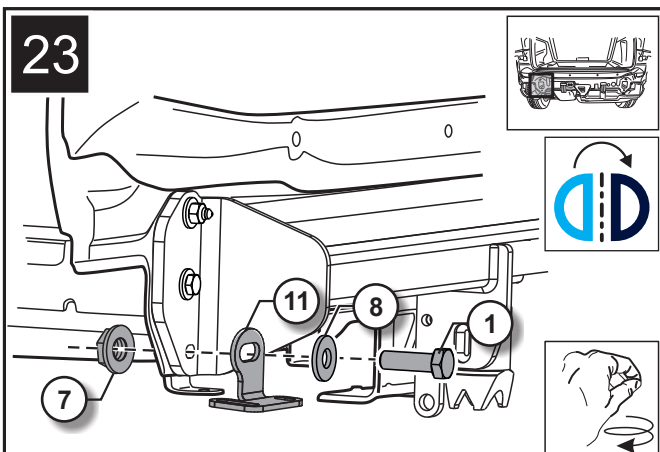
A. Install an additional plate



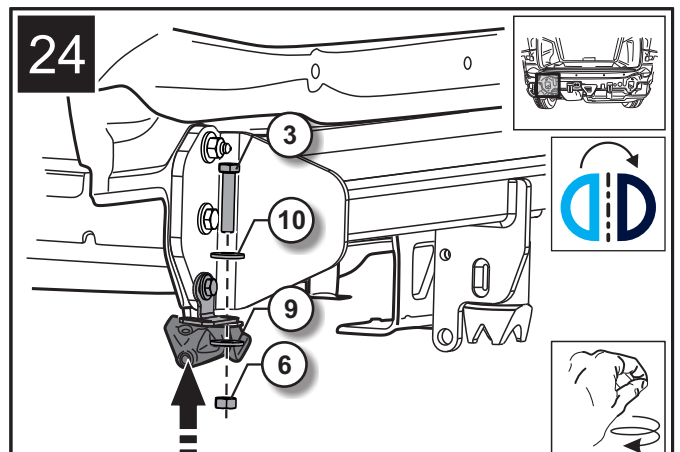
A. Install trailer hitch



A. Hand tighten all bolts and nuts



A. Install additional hardware to the trailer hitch (hand tighten everything)



A. Reinstall the exhaust to the trailer hitch



**25**

M6x30

A Segment

B Segment

Nylon (Ø18x6,4x1,6)

Steel (Ø18x6,4x1,6)

M6

**2 lbs-ft**

**A.** Assemble socket plate as shown in pictures and tighten to specifications provided (this is an optional plate for wiring harness)

**26**

13

4

D

C

**50 lbs-ft**

**A.** Assemble socket plate as shown in pictures and tighten to specifications provided (this is an optional plate for wiring harness)

**27**

86 lbs-ft

86 lbs-ft

25 lbs-ft

lbs-ft

**A.** Tighten all hardware to specifications listed

**28**

**A.** Put the modules back in the trunk of the vehicle

**29**

When making the cutout, please make sure to have enough clearance to operate hitch functions properly. This cutout is a guide, as some vehicle models will have slightly different build options.

**A.** Make cutout in bumper following the two different templates listed (29a /29b)

**29a**

GLC  
 Facelift 2019-

**A.** Make cutout in bumper following the two different templates listed

**29b**

GLC  
 Facelift 2019-

**A.** Make cutout in bumper following the two different templates listed

**30**

**A.** Reattach the bumper and all removed parts in the reverse order it was taken off from step 11 to step 1.

**ORIS**  
ACPS

**HELPLINE**



[www.oris-automotive.com/en/acps-automotive-aftermarket-worldwide](http://www.oris-automotive.com/en/acps-automotive-aftermarket-worldwide)

**ORIS**  
ACPS