



Hitch, 2" Receiver, Hyundai Sante Fe, Kia Sorento

INSTALLATION INSTRUCTIONS

READ ALL WARNINGS AND INSTRUCTIONS BEFORE INSTALLATION

⚠ WARNING: Never exceed the vehicle manufacturer's recommended towing capacity.

NOTICE:

- Always use proper tools and safety equipment to ensure a safe and quality installation.
- Inspection of the trailer hitch should be performed before and after each use to ensure all mounting hardware is tight and related hitch components are secure.

⚠ WARNING: Before you begin installation, read all instructions thoroughly.

⚠ WARNING: Safety glasses should be worn at all times while installing this product.

⚠ WARNING: Failure to adhere to exact torque specifications when securing hardware during the installation process can result in damage to the product or your vehicle. This will void the hitch warranty.

LEVEL OF DIFFICULTY: Easy

Installation difficulty levels are based on time and effort required. They will vary depending on the installer's expertise. Vehicle condition could be a factor in the level of difficulty for a proper installation.

WEIGHT CARRYING CAPACITY

Gross Trailer Weight (GTW)	4,500 lb
Tongue Weight (TW)	675 lb

WEIGHT DISTRIBUTION CAPACITY

Weight Distribution (WD)	NA
WD Tongue Weight (WDTW)	NA

PARTS LIST

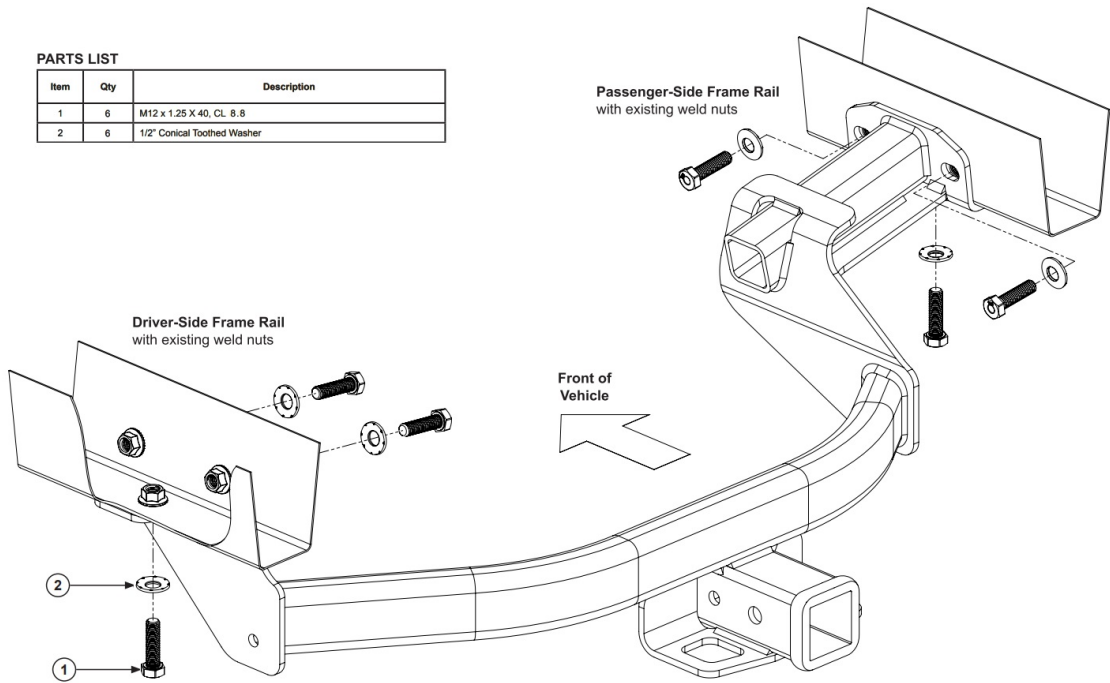
Item	Qty	Description
1	6	Hex Bolt, M12-1.25 x 40mm, CL 8.8
2	6	Conical Washer, 1/2"

TOOLS REQUIRED

Ratchet
3/8 Socket
19mm Socket
Socket Extension 3" & 6"
Torque Wrench
1" Wrench or Larger
Flat head Screwdriver
Rotary Tool
Safety Glasses

PARTS LIST

Item	Qty	Description
1	6	M12 x 1.25 X 40, CL. 8.8
2	6	1/2" Conical Toothed Washer

**INSTALLATION:**

- For Kia Sorento models only: Remove the plastic cover by removing the three lower plastic clips located on the driver's side near the wheel well and gently pulling down. If the plastic cover cannot be removed, unscrew the two upper plastic nuts. Set aside for reinstallation.
- For models with a spare tire: Loosen the spare tire carrier nut using a 3/8" socket. Lower the spare tire and set it aside for reinstallation.
- All models: Lower the exhaust by removing the four rearmost exhaust hanger rods from the three rubber isolators. Always ensure the exhaust system is supported to prevent damage.
- All models: Remove one rubber plug from the bottom of the frame rail on both sides. Return to the vehicle owner.
- All models: Lift the trailer hitch into position by sliding the passenger side of the hitch over the exhaust. On both sides of the vehicle, align the three holes in the hitch with the three weld nuts in the frame rail. Loosely install 3 hex bolts and 3 conical washers into the weld nuts on both sides. Torque all M12 fasteners to 60 ft-lbs.

NOTICE: A slight adjustment of 5-7 degrees of rearmost frame-rail exhaust hanger rod might be needed if there is interference with the hitch after installation. This can be done by removing the rubber isolator and making the adjustment with a box wrench. Reinstall the rubber isolator.

- All models: Reinstall the plastic cover, spare tire and exhaust.

IF YOU EXPERIENCE ANY PROBLEMS WITH YOUR TOWSMART PRODUCT, DO NOT RETURN THE UNIT TO THE RETAILER FROM WHICH IT WAS PURCHASED. INSTEAD, PLEASE CALL 1-844-295-9215 FOR ASSISTANCE WITH ANY PROBLEMS. WARRANTY INFORMATION IS AVAILABLE UPON REQUEST AND CAN BE FOUND ONLINE AT TOWSMART.COM.

©02/2024



CUSTOM

A Winston Products Company
TOWSMART.COM
WINSTON PRODUCTS, LLC.
30339 Diamond Parkway
Cleveland, OH 44139