



Hitch, 2" Receiver, Chevrolet Traverse, Buick Enclave INSTALLATION INSTRUCTIONS

READ ALL WARNINGS AND INSTRUCTIONS BEFORE INSTALLATION

⚠️WARNING: Never exceed the vehicle manufacturer's recommended towing capacity.

NOTICE:

- Always use proper tools and safety equipment to ensure a safe and quality installation.
- Inspection of the trailer hitch should be performed before and after each use to ensure all mounting hardware is tight and related hitch components are secure.

⚠️WARNING: Before you begin installation, read all instructions thoroughly.

⚠️WARNING: Safety glasses should be worn at all times while installing this product.

⚠️WARNING: Failure to adhere to exact torque specifications when securing hardware during the installation process can result in damage to the product or your vehicle. This will void the hitch warranty.

LEVEL OF DIFFICULTY: Easy

Installation difficulty levels are based on time and effort required. They will vary depending on the installer's expertise. Vehicle condition could be a factor in the level of difficulty for a proper installation.

WEIGHT CARRYING CAPACITY

Gross Trailer Weight (GTW)	5,000 lb
Tongue Weight (TW)	750 lb

WEIGHT DISTRIBUTION CAPACITY

Weight Distribution (WD)	5,000 lb
WD Tongue Weight (WDTW)	750 lb

PARTS LIST

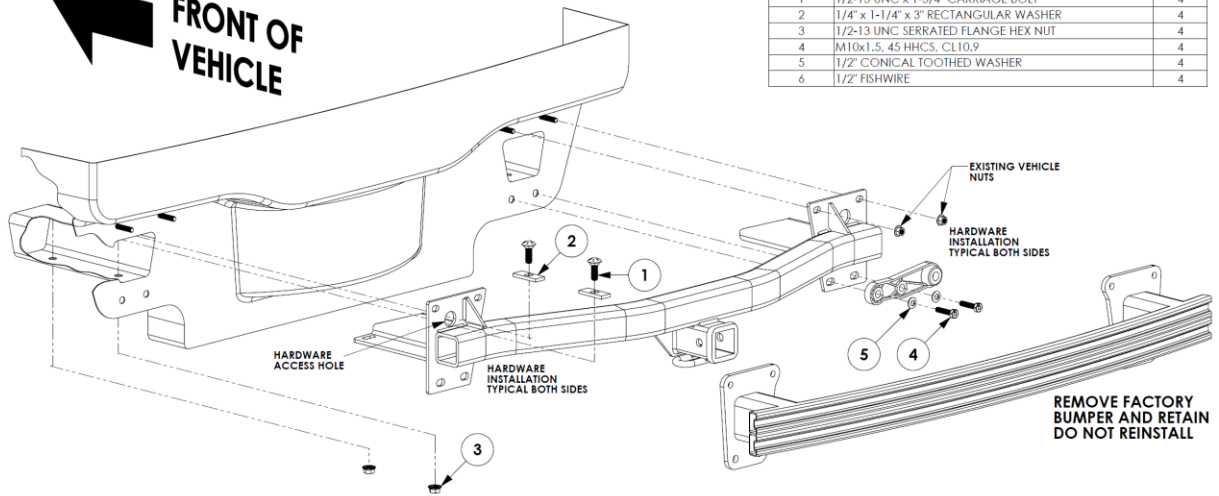
ITEM NO.	DESCRIPTION	QTY.
1	1/2-13 UNC x 1-3/4" CARRIAGE BOLT	4
2	1/4" x 1-1/4" x 3" RECTANGULAR WASHER	4
3	1/2-13 UNC SERRATED FLANGE HEX NUT	4
4	M10x1.5, 45 HHCS, CL10.9	4
5	1/2" CONICAL TOOTHED WASHER	4
6	1/2" FISHWIRE	4

TOOLS REQUIRED

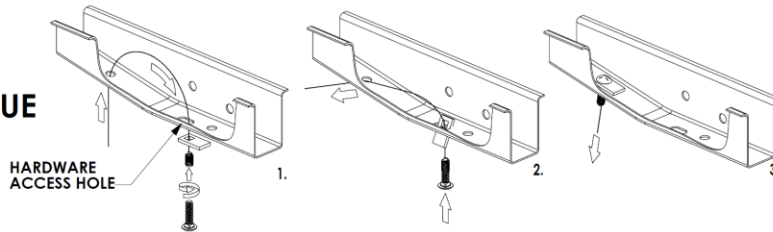
Ratchet
T15, T20 TORX
7mm, 15mm, 3/8" Socket
Torque Wrench
6" Socket Extension
Safety Glasses
Screw Drive



ITEM NO.	DESCRIPTION	QTY.
1	1/2-13 UNC x 1-3/4" CARRIAGE BOLT	4
2	1/4" x 1-1/4" x 3" RECTANGULAR WASHER	4
3	1/2-13 UNC SERRATED FLANGE HEX NUT	4
4	M10x1.5, 45 HHCS, CL10.9	4
5	1/2" CONICAL TOOTHED WASHER	4
6	1/2" FISHWIRE	4



FISHWIRE TECHNIQUE



FISH WIRE TECHNIQUE

1. Insert the coiled end of the fish wire tool through the mounting hole in the vehicle frame rail and out the access hole.
2. Thread the coiled end of the fish wire through the spacer and thread the bolt into the coil.
3. Kink the wire to keep the spacer separate from the bolt.
4. Pull the spacer and bolt through the frame and out the mounting hole.
5. Keep the fish wire secure to prevent loss of the bolt or spacer inside the frame rail.

INSTALLATION:

1. Open tailgate and pry open the four plastic covers below the tailgate lights to remove the four screws using a 7mm socket, two on each side.
2. Remove the two screws that connect the bottom lower edge of the facia to the metal support tabs using a T20 socket.
3. Remove eight screws that connect the wheel well liner to the facia using a T15 socket, four on each side.
4. Carefully pull back the wheel well trim, and remove the two screws that connect the facia to the body with a 7mm socket, one on each side.
5. Additionally, starting from the wheel well, carefully pull off the facia. Unplug the wires that are attached.
6. Remove the four M10 nuts with a 15mm socket from the top bumper attachments and set aside.
7. Remove the four M10 bolts with a 15mm socket from the bottom bumper attachments. Always ensure the vehicle exhaust system is supported. Return the bumper beam and bolts to the vehicle owner.
8. Lift the hitch into position over the bumper studs, and reinstall the nuts removed previously. Raise the exhaust hangers into position and install the M10 bolts and conical washers. Fishwire the carriage bolts and spacers into the vehicle through the access hole provided into the hitch and install the conical washer and nuts.
9. Tighten all 1/2" fasteners with a torque wrench to 110 ft-lb and all M10 fasteners to 45 ft-lbs.
10. Reverse the facia removal process in step one to re-install the facia.

IF YOU EXPERIENCE ANY PROBLEMS WITH YOUR TOWSMART PRODUCT, DO NOT RETURN THE UNIT TO THE RETAILER FROM WHICH IT WAS PURCHASED. INSTEAD, PLEASE CALL 1-844-295-9215 FOR ASSISTANCE WITH ANY PROBLEMS. WARRANTY INFORMATION IS AVAILABLE UPON REQUEST AND CAN BE FOUND ONLINE AT TOWSMART.COM.

©02/2024



CUSTOM

A Winston Products Company
TOWSMART.COM
WINSTON PRODUCTS, LLC.
30339 Diamond Parkway
Cleveland, OH 44139