

Hitch, 2” Receiver Ford Maverick

INSTALLATION INSTRUCTIONS

READ ALL WARNINGS AND INSTRUCTIONS BEFORE INSTALLATION

⚠WARNING: Never exceed the vehicle manufacturer’s recommended towing capacity.

NOTICE:

- Always use proper tools and safety equipment to ensure a safe and quality installation.
- Inspection of the trailer hitch should be performed before and after each use to ensure all mounting hardware is tight and related hitch components are secure.

⚠WARNING: Before you begin installation, read all instructions thoroughly.

⚠WARNING: Safety glasses should be worn at all times while installing this product.

⚠WARNING: Failure to adhere to exact torque specifications when securing hardware during the installation process can result in damage to the product or your vehicle. This will void the hitch warranty.

LEVEL OF DIFFICULTY: Easy

Installation difficulty levels are based on time and effort required. They will vary depending on the installer’s expertise. Vehicle condition could be a factor in the level of difficulty for a proper installation.

WEIGHT CARRYING CAPACITY

Gross Trailer Weight (GTW)	4,500 lb
Tongue Weight (TW)	675 lb

WEIGHT DISTRIBUTION CAPACITY

Weight Distribution (WD)	4,500 lb
WD Tongue Weight (WDTW)	675 lb

PARTS LIST

ITEM	DESCRIPTION	QTY
1	M12 x 1.75, 40 Hex Head Cap Screw	4
2	Conical Toothed Washer, 1/2"	4
3	7/16-14 UNC x 1-3/4" Carriage Bolt	2
4	7/16" Square Hole Spacer	2
5	7/16-14 UNC Serrated Flange Nut	2
-	7/16" Fishwire	2

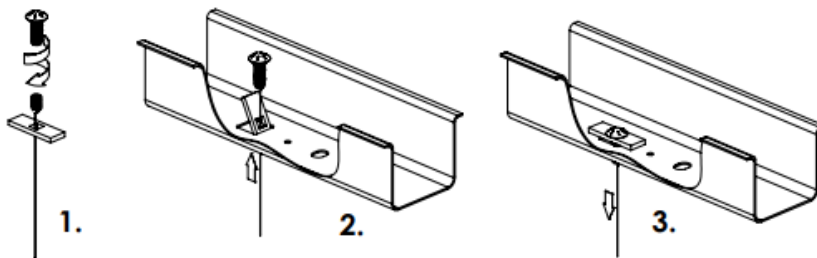
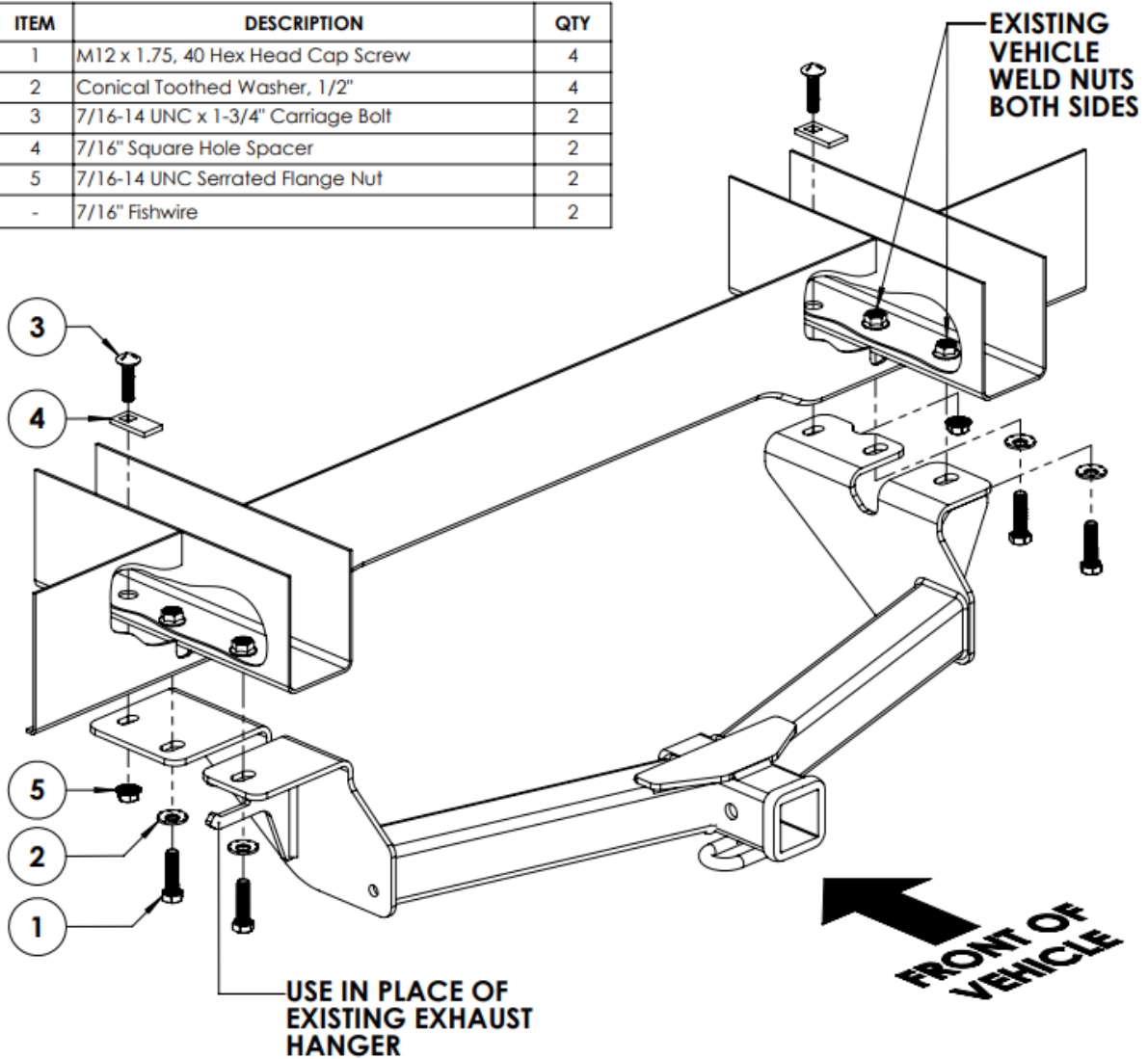
TOOLS REQUIRED

Safety Glasses	18mm Socket
Torque Wrench	19mm Socket
Ratchet	11/16" Socket
7mm Socket	Tape Measure
10mm Socket	Tin Snips

INSTALLATION:

1. Lower the exhaust by detaching the three rear most exhaust hangers while ensuring it is supported to prevent damage.
2. Remove the underbody panel by removing eight screws with the 7mm socket and removing the plastic push fastener. Retain screws and plastic push fastener for reinstallation.
3. Remove the two bolts on each side securing the rear step bumper assembly to the frame rails using the 18mm socket.
4. Remove the rear most exhaust hanger from the driver’s side frame rail using the 10mm socket and ratchet. The rubber isolator will be reused but the metal hanger will not.
5. Reverse fish wire a 7/16” carriage bolt and square hole spacer into the oblong access hole on the underside of the frame rail on each side. Leave fish wire secured to the carriage bolt.
6. Either trim the rear bumper filler panel to create a 6-1/2” wide x 3-1/2” tall opening, centered on the vehicle, or remove the filler panel entirely by drilling out the two rivets securing it.
7. Lift hitch into position while threading the fish wires through their respective mounting slots. Install the four M12 hex head cap screws and 1/2” conical washers, two on each side, into the existing weld nuts on the step bumper assembly. Remove the fish wires and install the 7/16” serrated flange nuts being careful not to loose the cap screws in the rails.
8. Torque all 7/16" hardware to 59 lb-ft. and M12 hardware to 79 lb-ft.

ITEM	DESCRIPTION	QTY
1	M12 x 1.75, 40 Hex Head Cap Screw	4
2	Conical Toothed Washer, 1/2"	4
3	7/16-14 UNC x 1-3/4" Carriage Bolt	2
4	7/16" Square Hole Spacer	2
5	7/16-14 UNC Serrated Flange Nut	2
-	7/16" Fishwire	2



REVERSE FISHWIRE TECHNIQUE

1. Feed the coiled end of the fish wire through the square hole spacer and thread the carriage bolt into the coil.
2. Insert the carriage bolt, head first, into the access hole followed by the square hole spacer.
3. Using the tail of the fishwire, gently pull the threaded end of the carriage bolt back down through the access hole making sure that the square shank of the carriage bolt seats properly in the square hole spacer.
4. Keep the fish wire secure to prevent loss of the carriage bolt of the spacer inside the frame rail.

IF YOU EXPERIENCE ANY PROBLEMS WITH YOUR TOWSMART PRODUCT, DO NOT RETURN THE UNIT TO THE RETAILER FROM WHICH IT WAS PURCHASED. INSTEAD, PLEASE CALL 1-844-295-9215 FOR ASSISTANCE WITH ANY PROBLEMS. WARRANTY INFORMATION IS AVAILABLE UPON REQUEST AND CAN BE FOUND ONLINE AT TOWSMART.COM.

©02/2024



CUSTOM

A Winston Products Company
TOWSMART.COM
WINSTON PRODUCTS, LLC.
30339 Diamond Parkway
Cleveland, OH 44139