



## HITCH, 2" Receiver, Chrysler Pacifica & Voyager INSTALLATION INSTRUCTIONS

### READ ALL WARNINGS AND INSTRUCTIONS BEFORE INSTALLATION

**⚠️ WARNING:** The manufacturer of your vehicle may specify towing capacities lower than the capacities noted below. Never exceed the vehicle manufacturer's recommended towing capacity. Consult your vehicle's owner's manual for the manufacturer's recommended towing capacity for your specific vehicle.

### NOTICE:

- Always use proper tools and safety equipment to ensure a safe and quality installation.
- Inspection of the trailer hitch should be performed before and after each use to ensure all mounting hardware is tight and related hitch components are secure.

**⚠️ WARNING:** Before you begin installation, read all instructions thoroughly.

**⚠️ WARNING:** Safety glasses should be worn at all times while installing this product.

**⚠️ WARNING:** Failure to adhere to exact torque specifications when securing hardware during the installation process can result in damage to the product or your vehicle. This will void the hitch warranty.

### LEVEL OF DIFFICULTY: EASY

Installation difficulty levels are based on the time and effort required. They will vary depending on the installer's expertise. Vehicle condition could be a factor in the level of difficulty for a proper installation.

| WEIGHT CARRYING CAPACITY   |           |
|----------------------------|-----------|
| Gross Trailer Weight (GTW) | 4,000 LBS |
| Tongue Weight (TW)         | 400 LBS   |

| WEIGHT DISTRIBUTING CAPACITY |           |
|------------------------------|-----------|
| Gross Trailer Weight (GTW)   | 5,000 LBS |
| Tongue Weight (TW)           | 500 LBS   |

| TOOLS REQUIRED       |                 |              |               |
|----------------------|-----------------|--------------|---------------|
| SAFETY GLASSES       | RATCHET         | 8mm SOCKET   | 10mm SOCKET   |
| STANDARD SCREWDRIVER | AVIATION SHEARS | 8" EXTENSION | TORQUE WRENCH |

### INSTALLATION:

1. Remove the underbody panel by removing the fasteners securing it to the vehicle. There are eight fasteners that require the 8mm socket (three in the driver's side wheel well, two on the side of the underbody panel, and four across the back) and six plastic nuts that require the 10mm socket. In order to access the two front nuts, it may be required to remove two metal nuts securing the rear of the other underbody panel. Additionally, there are two plastic twist fasteners to remove using the standard screwdriver. Model years and model versions may vary. Retain fasteners for reinstallation.

2. Lower the exhaust by detaching the two rear most exhaust hangers using a pry bar or exhaust hanger removal tool. Ensure that the exhaust is supported prior to removing the hangers to prevent damage.

3. Remove the heat shield, located on the passenger side of the vehicle, by removing the two plastic nuts with the 10mm socket and ratchet. Retain fasteners and heat shield for reinstallation. Trim heat shield to remove the flange that mates with the underside of the frame rail. See **Fig. 1** for trimming directions.

4. Hybrid models will require the temporary removal of the emissions canister and ground wire from the driver's side frame rail by removing the three fasteners securing them using the 10mm socket. Non-hybrid models requires the removal of a nut toward the rear of the driver's side frame rail using the 10mm socket.

CONTINUED NEXT PAGE

5. Locate the five mounting holes on the underside of the vehicle's frame rails. The forward-most hole will serve as both the access hole and a mounting hole for this installation. Fishwire a 1/2-13 carriage bolt (ITEM 1) and a square hole rectangular washer (ITEM 2) into each mounting hole, leaving the fishwires attached to each. The forward most hole on each side will require the reverse fishwire technique once the other fasteners are already in place. See FIG. 2 for an illustration of the fishwire techniques.

6. Lift hitch into position while first feeding the five fishwires and then the 1/2-13 carriage bolts through their respective mounting holes in the hitch. Lifting the passenger side mounting flange over the exhaust before lifting the driver's side mounting flange into position is recommended.

7. Thread a 1/2-13 serrated flange nut (ITEM 4) onto each protruding carriage bolt after removing the fishwire from the fastener. Care must be taken when removing the fishwire to prevent the fastener from coming out of position and being pushed inside the frame rail.

8. Torque all 1/2" fasteners to 110 ft-lb with the torque wrench and 3/4" socket.

9. Reinstall the emissions canister. After removing all paint and dirt to expose bare metal on a suitable location of the frame rail, relocate the ground wire and secure with the provided 1/4" tapping fastener.

10. Lift the exhaust back into its correct position and reattach the two rear-most exhaust hangers.

11. Trim the underbody panel to create a 1/2" x 10" slot extending forward from the back edge and reinstall using the original fasteners removed in step 1. See FIG. 3 for underbody trimming illustration.

| ITEM | DESCRIPTION                          | QTY |
|------|--------------------------------------|-----|
| 1    | 1/2-13 UNC CARRIAGE BOLT             | 5   |
| 2    | 1/2" SQUARE HOLE, RECTANGULAR WASHER | 5   |
| 3    | 1/2-13 UNC SERRATED FLANGE HEX NUT   | 5   |
| -    | 1/2" FISHWIRE                        | 5   |

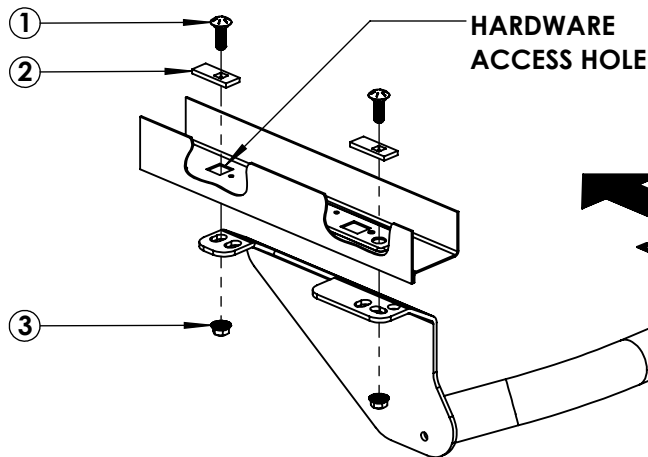
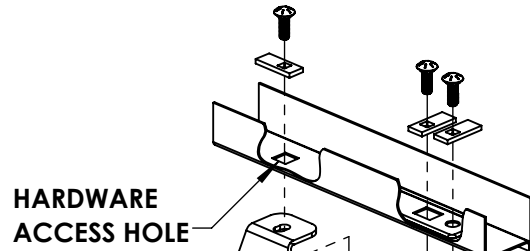
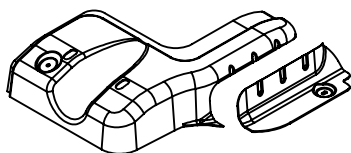
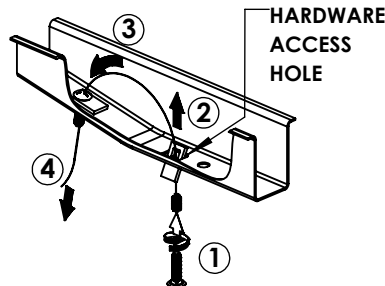


FIG. 1



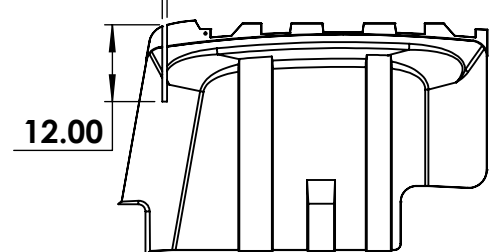
HEAT SHIELD TRIMMING

FIG. 2



FISHWIRE TECHNIQUE

FIG. 3



UNDERBODY PANEL TRIMMING

