



HITCH, 2" Receiver, Toyota Sienna INSTALLATION INSTRUCTIONS

READ ALL WARNINGS AND INSTRUCTIONS BEFORE INSTALLATION

⚠️ WARNING: The manufacturer of your vehicle may specify towing capacities lower than the capacities noted below. Never exceed the vehicle manufacturer's recommended towing capacity. Consult your vehicle's owner's manual for the manufacturer's recommended towing capacity for your specific vehicle.

NOTICE:

- Always use proper tools and safety equipment to ensure a safe and quality installation.
- Inspection of the trailer hitch should be performed before and after each use to ensure all mounting hardware is tight and related hitch components are secure.

⚠️ WARNING: Before you begin installation, read all instructions thoroughly.

⚠️ WARNING: Safety glasses should be worn at all times while installing this product.

⚠️ WARNING: Failure to adhere to exact torque specifications when securing hardware during the installation process can result in damage to the product or your vehicle. This will void the hitch warranty.

LEVEL OF DIFFICULTY: Easy

Installation difficulty levels are based on the time and effort required. They will vary depending on the installer's expertise. Vehicle condition could be a factor in the level of difficulty for a proper installation.

WEIGHT CARRYING CAPACITY	
Gross Trailer Weight (GTWR)	3,500 LBS
Tongue Weight (TW)	350 LBS

WEIGHT DISTRIBUTING CAPACITY	
Gross Trailer Weight (GTWR)	5,000 LBS
Tongue Weight (TW)	500 LBS

TOOLS REQUIRED			
SAFETY GLASSES	RATCHET	6" EXTENSION	TORQUE WRENCH
FLATHEAD SCREWDRIVER	10mm SOCKET	19mm SOCKET	AVIATION SHEARS

INSTALLATION:

1. Remove the underbody filler panel behind the driver's side rear wheel by removing the two plastic push fasteners securing on the side and by removing the two hex head screws toward the front with the 10mm socket. Retain hardware for reinstallation.
2. Locate the three mounting holes on the bottom of both frame rails. If covered by tape or plastic plugs, remove with a standard screw driver. Clean the threads of the weld nuts with a lubricant and wire brush. Carefully chase the threads with a M12 x 1.25 tap.
3. Lift hitch into position and secure with the six M12 x 1.25 hex head screws (**Item 1**) and conical toothed washers (**Item 2**). The washer's teeth should be mated with the mounting flange of the hitch.
4. Torque all M12 x 1.25 fasteners to 86 ft-lbs.

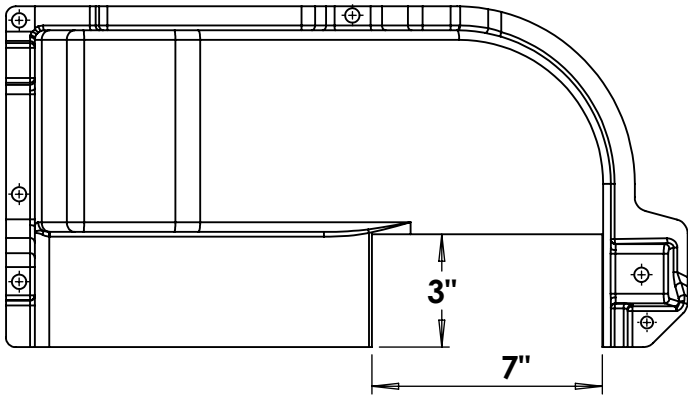
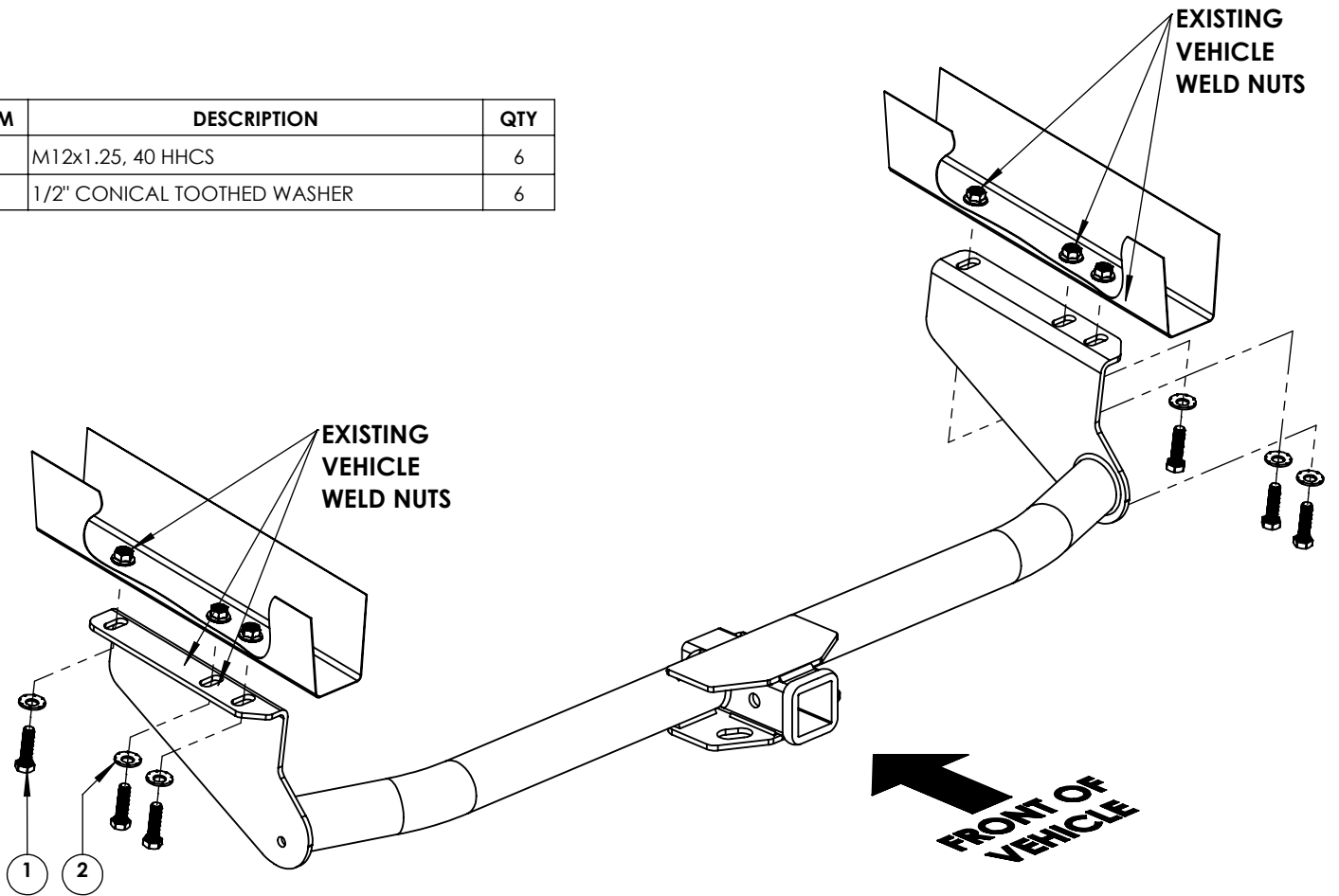
continued on next page

continued from the previous page

5. Trim underbody filler panel to allow it to be reinstalled with the hitch in place. See diagram below.

6. Reinstall underbody filler panel and secure with the plastic push fasteners and hex head screws removed in STEP 1.

ITEM	DESCRIPTION	QTY
1	M12x1.25, 40 HHCS	6
2	1/2" CONICAL TOOTHED WASHER	6



**UNDERBODY
PANEL
TRIMMING**

